

# 6-8-10LMG lines

## Deepwell Borehole

Submersible multistage centrifugal pumps for 6", 8", 10" wells. Check valve built into the delivery outlet. The motor bracket and coupling are made according to NEMA standards. Most common applications are civil and agricultural.

### Construction features

|                                      |  |
|--------------------------------------|--|
| <b>Suction and delivery outlet</b>   | cast iron GG25                               |
| <b>Valve</b>                         | stainless steel AISI 304                     |
| <b>Impellers and diffusers</b>       | cast iron GG25; AISI 304 impeller on request |
| <b>Upper bushings</b>                | NBR rubber                                   |
| <b>Shaft pump side</b>               | stainless steel AISI 304                     |
| <b>Quantity of sand in the water</b> | max 50 g/m <sup>3</sup>                      |

### Motor

|                            |  |
|----------------------------|--|
| <b>Asynchronous 2 pole</b> | rewindable water cooled  |
| <b>Insulation class</b>    | Y (max 30 °C) - PPC winding type<br>F (max 50 °C) - PE2+PA or LPE winding type |
| <b>Protection degree</b>   | IP68   |
| <b>Liquid temperature</b>  | max 30 °C (max 50 °C on request)   |
| <b>Depth of immersion</b>  | max 350 m  |

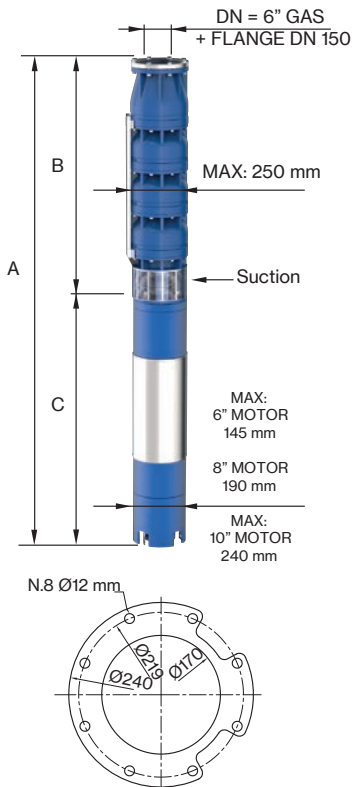


# 10LMG 190

| 50 Hz - 2900 rpm |                        |      |         | Q        |      |       |       |       |       |       |       |
|------------------|------------------------|------|---------|----------|------|-------|-------|-------|-------|-------|-------|
| TYPE             | SUITABLE MOTOR 3- 400V |      | l/min   | 0        | 1800 | 2200  | 2600  | 3000  | 3400  | 3800  |       |
|                  | P2                     |      | CURRENT | l/sec    | 0    | 30,00 | 36,67 | 43,33 | 50,00 | 56,67 | 63,33 |
|                  | HP                     | kW   | A       | m³/h     | 0    | 108   | 132   | 156   | 180   | 204   | 228   |
| 10LMG 190/01DR20 | 20                     | 15   | 32      | H<br>(m) | 32   | 29    | 28    | 25    | 24    | 20    | 16    |
| 10LMG 190/01DR10 | 25                     | 18,5 | 40      |          | 37   | 33    | 31    | 29    | 27    | 22    | 18    |
| 10LMG 190/01     | 30                     | 22   | 47,5    |          | 42   | 37    | 35    | 32    | 30    | 25    | 20    |
| 10LMG 190/02DR20 | 40                     | 30   | 62,5    |          | 65   | 58    | 55    | 50    | 48    | 40    | 32    |
| 10LMG 190/02DR10 | 50                     | 37   | 78      |          | 73   | 66    | 62    | 57    | 54    | 45    | 36    |
| 10LMG 190/02     | 60                     | 45   | 92      |          | 83   | 74    | 70    | 64    | 60    | 50    | 40    |
| 10LMG 190/03DR20 | 75                     | 55   | 113,5   |          | 97   | 88    | 83    | 76    | 71    | 59    | 47    |
| 10LMG 190/03DR10 | 75                     | 55   | 113,5   |          | 110  | 99    | 94    | 86    | 80    | 67    | 53    |
| 10LMG 190/03     | 90                     | 66   | 134,5   |          | 125  | 111   | 105   | 96    | 90    | 75    | 60    |
| 10LMG 190/04DR20 | 90                     | 66   | 134,5   |          | 130  | 117   | 110   | 101   | 95    | 79    | 63    |
| 10LMG 190/04DR10 | 100                    | 75   | 149,5   |          | 146  | 132   | 125   | 114   | 107   | 90    | 71    |
| 10LMG 190/04     | 100                    | 75   | 149,5   |          | 166  | 148   | 140   | 128   | 120   | 100   | 80    |
| 10LMG 190/05DR20 | 100                    | 75   | 149,5   |          | 162  | 146   | 138   | 126   | 119   | 99    | 79    |
| 10LMG 190/05DR10 | 125                    | 92   | 185     |          | 183  | 165   | 156   | 143   | 134   | 112   | 89    |
| 10LMG 190/05     | 150                    | 110  | 219     |          | 208  | 185   | 175   | 160   | 150   | 125   | 100   |
| 10LMG 190/06DR20 | 125                    | 92   | 185     |          | 194  | 175   | 166   | 151   | 143   | 119   | 95    |
| 10LMG 190/06DR10 | 150                    | 110  | 219     |          | 220  | 198   | 187   | 172   | 161   | 134   | 107   |
| 10LMG 190/06     | 175                    | 130  | 254,5   |          | 250  | 222   | 210   | 192   | 180   | 150   | 120   |
| 10LMG 190/07DR20 | 150                    | 110  | 219     |          | 227  | 204   | 193   | 176   | 167   | 139   | 111   |
| 10LMG 190/07DR10 | 175                    | 130  | 254,5   |          | 256  | 231   | 218   | 200   | 188   | 157   | 125   |
| 10LMG 190/07     | 200                    | 150  | 290     | 291      | 259  | 245   | 224   | 210   | 175   | 140   |       |
| 10LMG 190/08DR20 | 175                    | 130  | 254,5   | 259      | 234  | 221   | 202   | 190   | 158   | 126   |       |
| 10LMG 190/08DR10 | 200                    | 150  | 290     | 293      | 264  | 250   | 229   | 214   | 179   | 142   |       |
| 10LMG 190/08     | 225                    | 165  | 330     | 333      | 296  | 280   | 256   | 240   | 200   | 160   |       |

|                     |      |
|---------------------|------|
| Max Eff. % DR20 =   | 74   |
| Max Eff. % DR10 =   | 75   |
| Max Eff. %          | 75,5 |
| Max kW / St. DR20 = | 15,7 |
| Max kW / St. DR10 = | 17,5 |
| Max kW / St.        | 19,4 |

| NPSH (m) | Q=25% | Q=50% | Q=75% | Q=100% |
|----------|-------|-------|-------|--------|
|          | 3,6   | 5,3   | 8,1   | 14     |

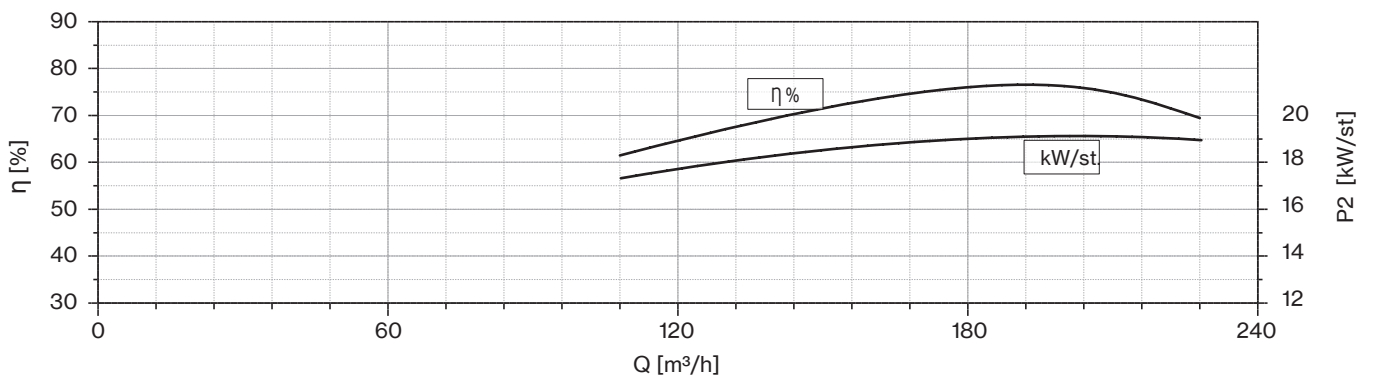
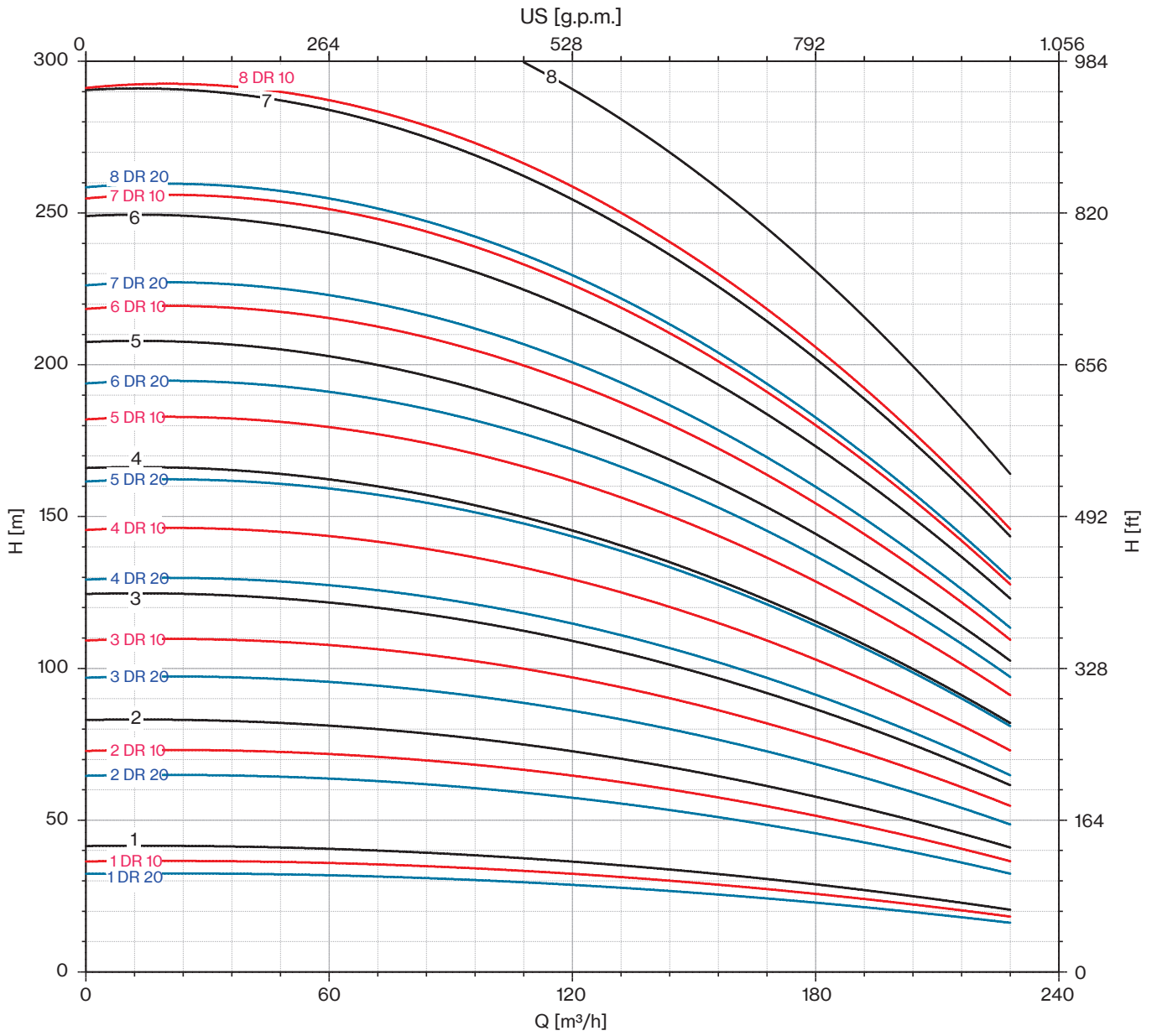


FOR COMMERCIAL TUBE  
EXTERNAL DIAMETER: 168,3 mm

| TYPE               | MOTOR BRACKET | DIMENSIONS (mm) |      |      | WEIGHT (kg) |      |
|--------------------|---------------|-----------------|------|------|-------------|------|
|                    |               | A               | B    | C    | MOTOR       | PUMP |
| 10LMG 190/01DR20-6 | 6" NEMA       | 1556            | 625  | 931  | 75          | 50   |
| 10LMG 190/01DR10-6 |               | 1616            | 625  | 991  | 83          | 50   |
| 10LMG 190/01-6     |               | 1696            | 625  | 1071 | 92          | 50   |
| 10LMG 190/02DR20-6 | 8" NEMA       | 2056            | 805  | 1251 | 108         | 68   |
| 10LMG 190/02DR10-6 |               | 2146            | 805  | 1341 | 118         | 68   |
| 10LMG 190/02-8     |               | 1928            | 805  | 1123 | 178         | 68   |
| 10LMG 190/03DR20-8 | 8" NEMA       | 2218            | 985  | 1233 | 200         | 87   |
| 10LMG 190/03DR10-8 |               | 2218            | 985  | 1233 | 200         | 87   |
| 10LMG 190/03-8     |               | 2288            | 985  | 1303 | 214         | 87   |
| 10LMG 190/04DR20-8 | 8" NEMA       | 2468            | 1165 | 1303 | 214         | 105  |
| 10LMG 190/04DR10-8 |               | 2548            | 1165 | 1383 | 230         | 105  |
| 10LMG 190/04-8     |               | 2548            | 1165 | 1383 | 230         | 105  |
| 10LMG 190/05DR20-8 | 8" NEMA       | 2728            | 1345 | 1383 | 230         | 124  |
| 10LMG 190/05DR10-8 |               | 2928            | 1345 | 1583 | 270         | 124  |
| 10LMG 190/05-8     |               | 3078            | 1345 | 1733 | 300         | 124  |
| 10LMG 190/06DR20   | 10"           | 3108            | 1525 | 1583 | 270         | 142  |
| 10LMG 190/06DR10   |               | 3258            | 1525 | 1733 | 300         | 142  |
| 10LMG 190/06       |               | 3159            | 1525 | 1634 | 385         | 142  |
| 10LMG 190/07DR20   | 10"           | 3438            | 1705 | 1733 | 300         | 161  |
| 10LMG 190/07DR10   |               | 3339            | 1705 | 1634 | 385         | 161  |
| 10LMG 190/07       |               | 3439            | 1705 | 1734 | 415         | 161  |
| 10LMG 190/08DR20   | 10"           | 3519            | 1885 | 1634 | 385         | 179  |
| 10LMG 190/08DR10   |               | 3619            | 1885 | 1734 | 415         | 179  |
| 10LMG 190/08       |               | 3739            | 1885 | 1854 | 444         | 179  |

"DR" : reduced-diameter impellers



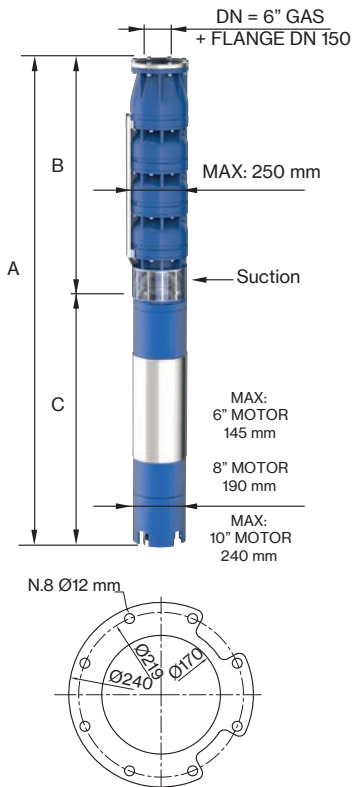


# 10LMG 230

| 50 Hz - 2900 rpm |                        |      |         | Q                 |      |       |       |       |       |       |       |       |
|------------------|------------------------|------|---------|-------------------|------|-------|-------|-------|-------|-------|-------|-------|
| TYPE             | SUITABLE MOTOR 3- 400V |      | l/min   | 0                 | 2200 | 2600  | 3000  | 3400  | 3800  | 4200  | 4400  |       |
|                  | P2                     |      | CURRENT | l/sec             | 0    | 36,67 | 43,33 | 50,00 | 56,67 | 63,33 | 70,00 | 73,33 |
|                  | HP                     | kW   | A       | m <sup>3</sup> /h | 0    | 132   | 156   | 180   | 204   | 228   | 252   | 264   |
| 10LMG 230/01DR20 | 25                     | 18,5 | 40      | H<br>(m)          | 34   | 29    | 28    | 26    | 24    | 22    | 19    | 16    |
| 10LMG 230/01DR10 | 30                     | 22   | 47,5    |                   | 38   | 33    | 31    | 29    | 27    | 25    | 21    | 17    |
| 10LMG 230/01     | 30                     | 22   | 47,5    |                   | 43   | 37    | 35    | 33    | 30    | 28    | 24    | 22    |
| 10LMG 230/02DR20 | 50                     | 37   | 78      |                   | 68   | 58    | 55    | 52    | 48    | 44    | 38    | 33    |
| 10LMG 230/02DR10 | 60                     | 45   | 92      |                   | 77   | 66    | 62    | 59    | 54    | 50    | 43    | 35    |
| 10LMG 230/02     | 60                     | 45   | 92      |                   | 86   | 74    | 70    | 66    | 60    | 56    | 48    | 44    |
| 10LMG 230/03DR20 | 75                     | 55   | 113,5   |                   | 102  | 88    | 83    | 78    | 71    | 67    | 57    | 49    |
| 10LMG 230/03DR10 | 90                     | 66   | 134,5   |                   | 115  | 99    | 94    | 88    | 80    | 75    | 64    | 52    |
| 10LMG 230/03     | 100                    | 75   | 149,5   |                   | 129  | 111   | 105   | 99    | 90    | 84    | 72    | 66    |
| 10LMG 230/04DR20 | 100                    | 75   | 149,5   |                   | 136  | 117   | 110   | 104   | 95    | 89    | 76    | 66    |
| 10LMG 230/04DR10 | 125                    | 92   | 185     |                   | 154  | 132   | 125   | 118   | 107   | 100   | 86    | 70    |
| 10LMG 230/04     | 125                    | 92   | 185     |                   | 172  | 148   | 140   | 132   | 120   | 112   | 96    | 88    |
| 10LMG 230/05DR20 | 125                    | 92   | 185     |                   | 170  | 146   | 138   | 130   | 119   | 111   | 95    | 82    |
| 10LMG 230/05DR10 | 150                    | 110  | 219     |                   | 192  | 165   | 156   | 147   | 134   | 125   | 107   | 87    |
| 10LMG 230/05     | 175                    | 130  | 254,5   |                   | 215  | 185   | 175   | 165   | 150   | 140   | 120   | 110   |
| 10LMG 230/06DR20 | 150                    | 110  | 219     |                   | 204  | 175   | 166   | 156   | 143   | 133   | 114   | 98    |
| 10LMG 230/06DR10 | 175                    | 130  | 254,5   |                   | 230  | 198   | 187   | 176   | 161   | 150   | 128   | 104   |
| 10LMG 230/06     | 200                    | 150  | 290     |                   | 258  | 222   | 210   | 198   | 180   | 168   | 144   | 132   |
| 10LMG 230/07DR20 | 175                    | 130  | 254,5   |                   | 238  | 204   | 193   | 182   | 167   | 155   | 133   | 115   |
| 10LMG 230/07DR10 | 200                    | 150  | 290     |                   | 269  | 231   | 218   | 206   | 188   | 175   | 150   | 122   |
| 10LMG 230/07     | 225                    | 165  | 330     | 301               | 259  | 245   | 231   | 210   | 196   | 168   | 154   |       |

|                     |      |
|---------------------|------|
| Max Eff. % DR20 =   | 75,5 |
| Max Eff. % DR10 =   | 76   |
| Max Eff. %          | 76,5 |
| Max kW / St. DR20 = | 18,3 |
| Max kW / St. DR10 = | 20,5 |
| Max kW / St.        | 23   |

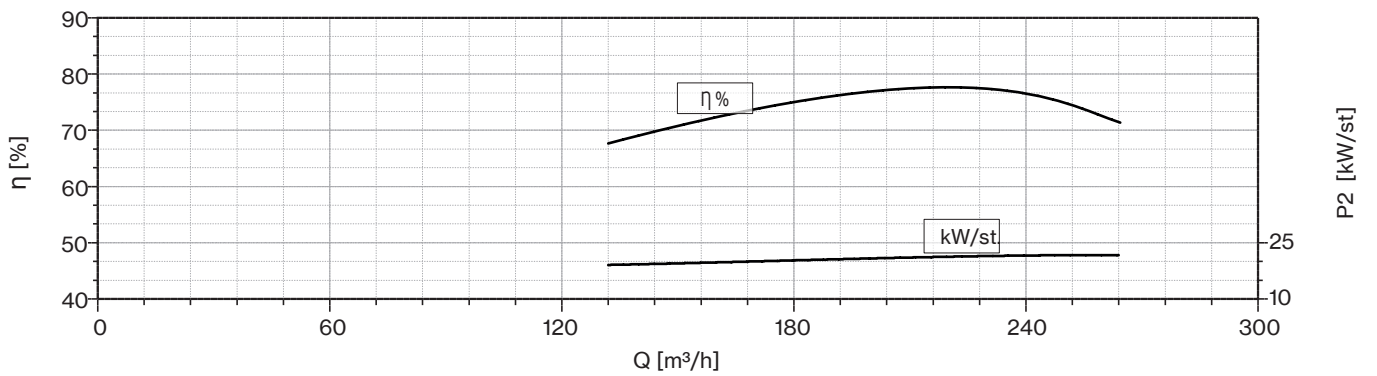
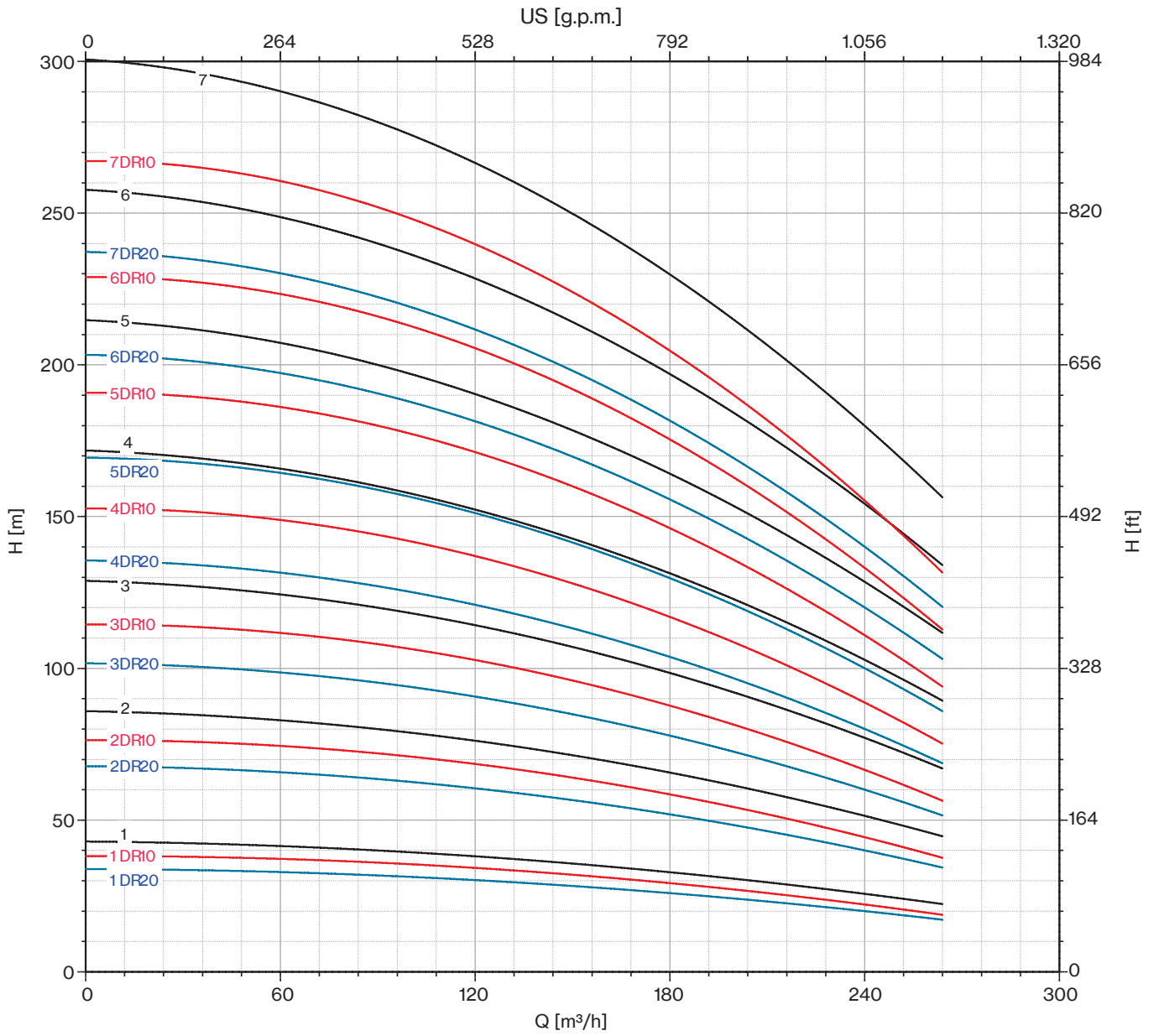
| NPSH (m) | Q=25% | Q=50% | Q=75% | Q=100% |
|----------|-------|-------|-------|--------|
|          | 3,7   | 5,4   | 8,3   | 14,2   |



| TYPE               | MOTOR BRACKET | DIMENSIONS (mm) |      |      | WEIGHT (kg) |      |
|--------------------|---------------|-----------------|------|------|-------------|------|
|                    |               | A               | B    | C    | MOTOR       | PUMP |
| 10LMG 230/01DR20-6 | 6" NEMA       | 1616            | 625  | 991  | 83          | 50   |
| 10LMG 230/01DR10-6 |               | 1696            | 625  | 1071 | 92          | 50   |
| 10LMG 230/01-6     |               | 1696            | 625  | 1071 | 92          | 50   |
| 10LMG 230/02DR20-6 | 8" NEMA       | 2146            | 805  | 1341 | 118         | 68   |
| 10LMG 230/02DR10-8 |               | 1928            | 805  | 1123 | 178         | 68   |
| 10LMG 230/02-8     |               | 1928            | 805  | 1123 | 178         | 68   |
| 10LMG 230/03DR20-8 |               | 2218            | 985  | 1233 | 200         | 87   |
| 10LMG 230/03DR10-8 |               | 2288            | 985  | 1303 | 214         | 87   |
| 10LMG 230/03-8     |               | 2368            | 985  | 1383 | 230         | 87   |
| 10LMG 230/04DR20-8 |               | 2548            | 1165 | 1383 | 230         | 105  |
| 10LMG 230/04DR10-8 |               | 2748            | 1165 | 1583 | 270         | 105  |
| 10LMG 230/04-8     |               | 2748            | 1165 | 1583 | 270         | 105  |
| 10LMG 230/05DR20-8 |               | 2928            | 1345 | 1583 | 270         | 124  |
| 10LMG 230/05DR10-8 | 3078          | 1345            | 1733 | 300  | 124         |      |
| 10LMG 230/05-8     | 2979          | 1345            | 1634 | 385  | 124         |      |
| 10LMG 230/06DR20-8 | 3258          | 1525            | 1733 | 300  | 142         |      |
| 10LMG 230/06DR10   | 3159          | 1525            | 1634 | 385  | 142         |      |
| 10LMG 230/06       | 3259          | 1525            | 1734 | 415  | 142         |      |
| 10LMG 230/07DR20   | 10"           | 3339            | 1705 | 1634 | 385         | 161  |
| 10LMG 230/07DR10   |               | 3439            | 1705 | 1734 | 415         | 161  |
| 10LMG 230/07       |               | 3559            | 1705 | 1854 | 444         | 161  |

"DR" : reduced-diameter impellers



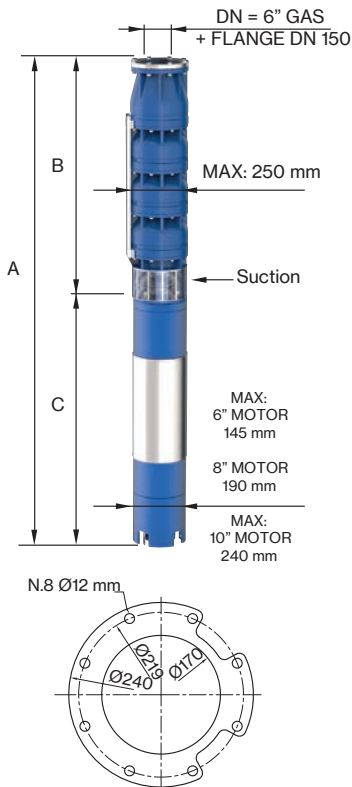


# 10LMG 250

| 50 Hz - 2900 rpm |                        |     |         | Q        |      |       |       |       |       |       |       |       |       |
|------------------|------------------------|-----|---------|----------|------|-------|-------|-------|-------|-------|-------|-------|-------|
| TYPE             | SUITABLE MOTOR 3- 400V |     | l/min   | 0        | 2400 | 2800  | 3200  | 3600  | 4000  | 4400  | 4800  | 5000  |       |
|                  | P2                     |     | CURRENT | l/sec    | 0    | 40,00 | 46,67 | 53,33 | 60,00 | 66,67 | 73,33 | 80,00 | 83,33 |
|                  | HP                     | kW  | A       | m³/h     | 0    | 144   | 168   | 192   | 216   | 240   | 264   | 288   | 300   |
| 10LMG 250/01DR20 | 30                     | 22  | 47,5    | H<br>(m) | 34   | 28    | 27    | 26    | 25    | 22    | 21    | 18    | 17    |
| 10LMG 250/01DR10 | 35                     | 26  | 55      |          | 38   | 32    | 30    | 29    | 28    | 25    | 23    | 20    | 20    |
| 10LMG 250/01     | 35                     | 26  | 55      |          | 43   | 36    | 34    | 33    | 31    | 28    | 26    | 23    | 22    |
| 10LMG 250/02DR20 | 60                     | 45  | 92      |          | 68   | 57    | 54    | 52    | 49    | 44    | 41    | 36    | 35    |
| 10LMG 250/02DR10 | 75                     | 55  | 113,5   |          | 77   | 64    | 61    | 59    | 55    | 50    | 46    | 41    | 39    |
| 10LMG 250/02     | 75                     | 55  | 113,5   |          | 86   | 72    | 68    | 66    | 62    | 56    | 52    | 46    | 44    |
| 10LMG 250/03DR20 | 90                     | 66  | 134,5   |          | 102  | 85    | 81    | 79    | 74    | 67    | 62    | 55    | 52    |
| 10LMG 250/03DR10 | 100                    | 75  | 149,5   |          | 115  | 96    | 91    | 88    | 83    | 75    | 70    | 61    | 59    |
| 10LMG 250/03     | 125                    | 92  | 185     |          | 129  | 108   | 102   | 99    | 93    | 84    | 78    | 69    | 66    |
| 10LMG 250/04DR20 | 125                    | 92  | 185     |          | 136  | 114   | 108   | 105   | 98    | 89    | 82    | 73    | 70    |
| 10LMG 250/04DR10 | 125                    | 92  | 185     |          | 154  | 128   | 122   | 118   | 110   | 100   | 93    | 82    | 78    |
| 10LMG 250/04     | 150                    | 110 | 219     |          | 172  | 144   | 136   | 132   | 124   | 112   | 104   | 92    | 88    |
| 10LMG 250/05DR20 | 150                    | 110 | 219     |          | 170  | 142   | 135   | 131   | 123   | 111   | 103   | 91    | 87    |
| 10LMG 250/05DR10 | 175                    | 130 | 254,5   |          | 192  | 160   | 152   | 147   | 138   | 125   | 116   | 102   | 98    |
| 10LMG 250/05     | 175                    | 130 | 254,5   |          | 215  | 180   | 170   | 165   | 155   | 140   | 130   | 115   | 110   |
| 10LMG 250/06DR20 | 175                    | 130 | 254,5   |          | 204  | 170   | 162   | 157   | 148   | 133   | 124   | 109   | 104   |
| 10LMG 250/06DR10 | 200                    | 150 | 290     |          | 230  | 192   | 182   | 176   | 166   | 150   | 139   | 122   | 118   |
| 10LMG 250/06     | 225                    | 165 | 330     |          | 258  | 216   | 204   | 198   | 186   | 168   | 156   | 138   | 132   |
| 10LMG 250/07DR20 | 225                    | 165 | 330     |          | 238  | 199   | 189   | 183   | 172   | 155   | 144   | 127   | 122   |
| 10LMG 250/07DR10 | 225                    | 165 | 330     |          | 269  | 224   | 213   | 206   | 193   | 175   | 162   | 143   | 137   |

|                     |      |
|---------------------|------|
| Max Eff. % DR20 =   | 75,5 |
| Max Eff. % DR10 =   | 76   |
| Max Eff. %          | 76,5 |
| Max kW / St. DR20 = | 21,9 |
| Max kW / St. DR10 = | 23,5 |
| Max kW / St.        | 26,3 |

| NPSH (m) | Q=25% | Q=50% | Q=75% | Q=100% |
|----------|-------|-------|-------|--------|
|          | 3,9   | 5,5   | 8,5   | 14,4   |

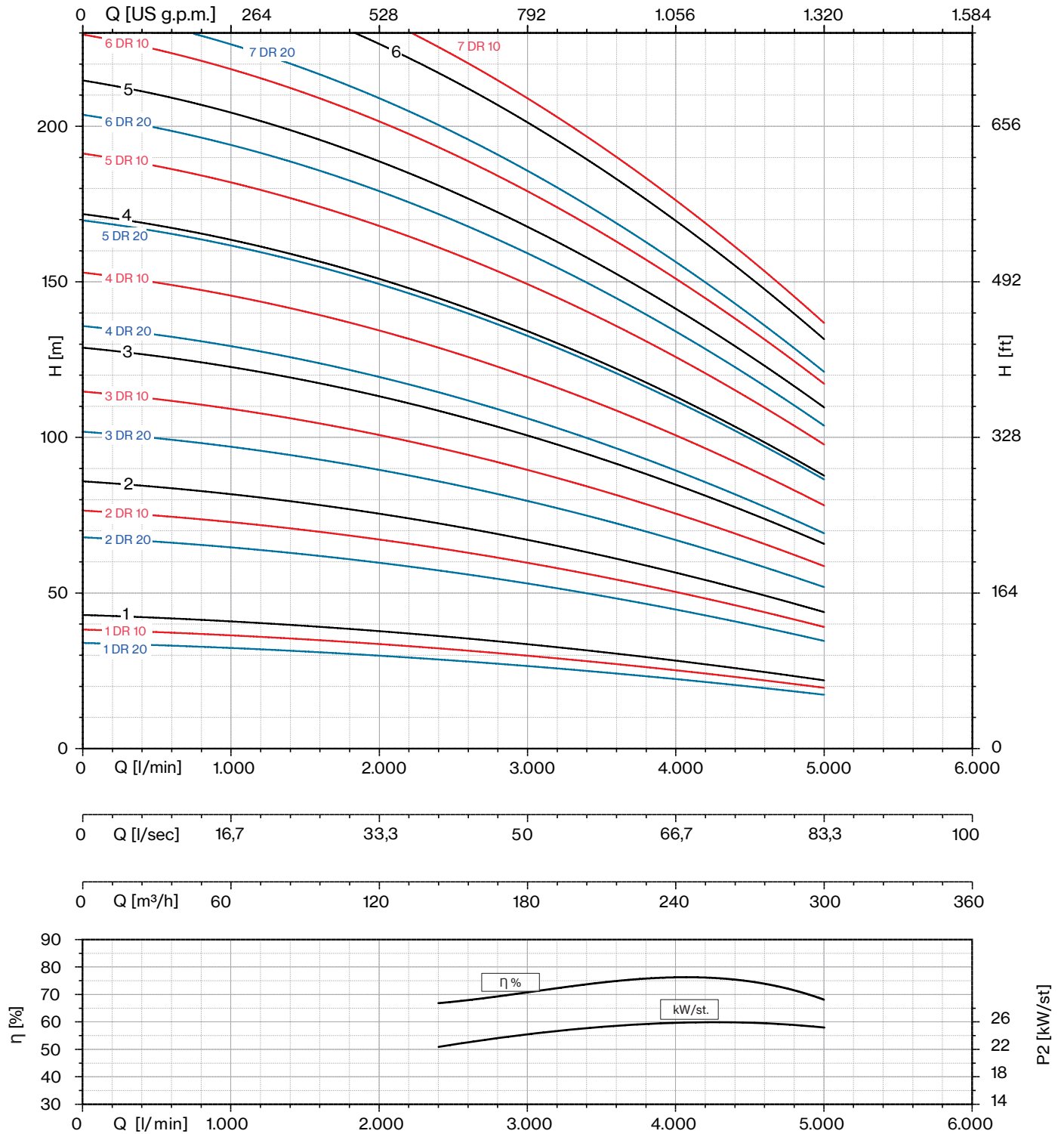


FOR COMMERCIAL TUBE  
EXTERNAL DIAMETER: 168,3 mm

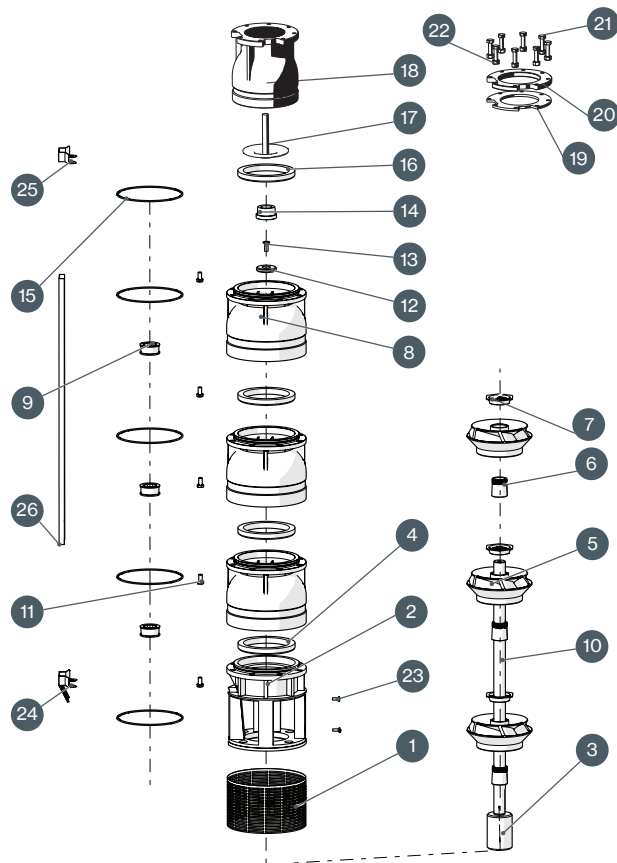
| TYPE               | MOTOR BRACKET | DIMENSIONS (mm) |      |      | WEIGHT (kg) |      |
|--------------------|---------------|-----------------|------|------|-------------|------|
|                    |               | A               | B    | C    | MOTOR       | PUMP |
| 10LMG 250/01DR20-6 | 6" NEMA       | 1696            | 625  | 1071 | 92          | 50   |
| 10LMG 250/01DR10-6 |               | 1806            | 625  | 1181 | 100         | 50   |
| 10LMG 250/01-6     |               | 1806            | 625  | 1181 | 100         | 50   |
| 10LMG 250/02DR20-8 | 8" NEMA       | 1928            | 805  | 1123 | 178         | 68   |
| 10LMG 250/02DR10-8 |               | 2038            | 805  | 1233 | 200         | 68   |
| 10LMG 250/02-8     |               | 2038            | 805  | 1233 | 200         | 68   |
| 10LMG 250/03DR20-8 |               | 2288            | 985  | 1303 | 214         | 87   |
| 10LMG 250/03DR10-8 |               | 2368            | 985  | 1383 | 230         | 87   |
| 10LMG 250/03-8     |               | 2568            | 985  | 1583 | 270         | 87   |
| 10LMG 250/04DR20-8 | 10"           | 2748            | 1165 | 1583 | 270         | 105  |
| 10LMG 250/04DR10-8 |               | 2748            | 1165 | 1583 | 270         | 105  |
| 10LMG 250/04-8     |               | 2898            | 1165 | 1733 | 300         | 105  |
| 10LMG 250/05DR20   |               | 3078            | 1345 | 1733 | 300         | 124  |
| 10LMG 250/05DR10   |               | 2979            | 1345 | 1634 | 385         | 124  |
| 10LMG 250/05       |               | 2979            | 1345 | 1634 | 385         | 124  |
| 10LMG 250/06DR20   |               | 3159            | 1525 | 1634 | 385         | 142  |
| 10LMG 250/06DR10   |               | 3259            | 1525 | 1734 | 415         | 142  |
| 10LMG 250/06       |               | 3379            | 1525 | 1854 | 444         | 142  |
| 10LMG 250/07DR20   |               | 3559            | 1705 | 1854 | 444         | 161  |
| 10LMG 250/07DR10   | 3559          | 1705            | 1854 | 444  | 161         |      |

"DR" : reduced-diameter impellers





## 6-8-10 LMG



| N. CODE | DESCRIPTION                    | MATERIAL          |
|---------|--------------------------------|-------------------|
| 1       | SUCTION STRAINER               | AISI 304          |
| 2       | SUCTION CAGE                   | CAST IRON         |
| 3       | JOINT                          | AISI 304          |
| 4       | USURY RING                     | NBR               |
| 5       | IMPELLER                       | CAST IRON         |
| 6       | CONE                           | AISI 304          |
| 7       | HEXAGONAL RING                 | AISI 304          |
| 8       | DIFFUSEUR                      | AISI 304          |
| 9       | BEARING BUSH                   | NBR               |
| 10      | PUMP SHAFT                     | AISI 304          |
| 11      | N.8 SCREW FOR DIFFUSEUR        | AISI 304          |
| 12      | RING                           | AISI 304          |
| 13      | SCREW FOR DISK                 | AISI 304          |
| 14      | COUNTERTHRUST                  | PTFE + 25% CARBON |
| 15      | O-RING                         | NBR               |
| 16      | GASKET VALVE                   | NBR               |
| 17      | CAP VALVE                      | AISI 304          |
| 18      | BODY VALVE                     | CAST IRON         |
| 19      | SEAL COUNTERFLANGE             | NBR               |
| 20      | COUNTERFLANGE                  | IRON              |
| 21      | N.8 SCREW FOR COUNTERFLANGE    | AISI 304          |
| 22      | N.8 NUT FOR COUNTERFLANGE      | AISI 304          |
| 23      | N.2 SCREW FOR SUCTION STRAINER | AISI 304          |
| 24      | LOWER FLANGE                   | AISI 304          |
| 25      | UPPER FLANGE                   | AISI 304          |
| 26      | COVER CABLE                    | AISI 304          |

