


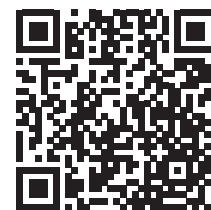
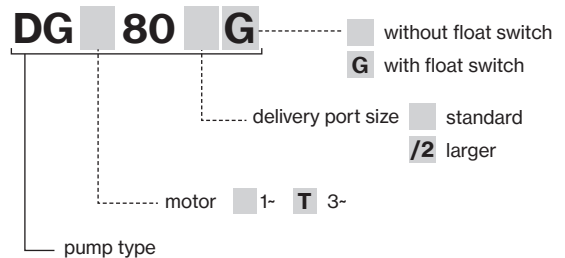
### Construction features

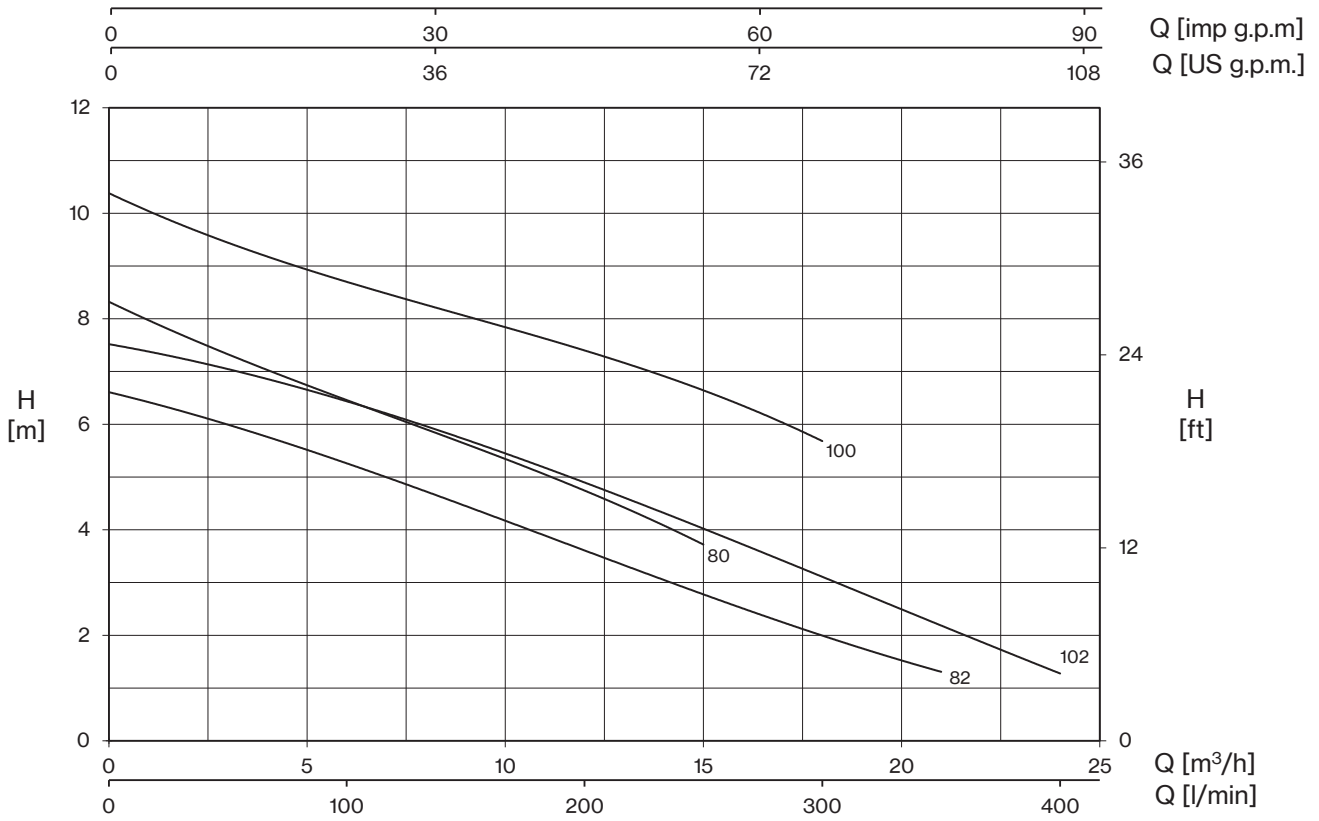
<b>Painting</b>	cataphoresis
<b>Pump body</b>	cast iron
<b>Shell, motor cover, base support</b>	stainless steel
 <b>Impeller</b>	Vortex stainless steel (80-102); brass (150)
<b>Mechanical seal</b>	double seal with oil barrier: pump side with silicon carbide mechanical seal; motor side with sealing ring (80÷102) or ceramic-graphite mechanical seal (150)
<b>Motor shaft</b>	stainless steel AISI 430
<b>Free passage</b>	Ø max 35 mm (80-100) Ø max 50 mm (82÷150)
<b>Max submergence</b>	5 m
<b>Liquid temperature</b>	0 - 40 °C
<b>Cable</b>	H07 RN8F, 10 m
<b>G</b>	float switch

### Motor

	3- 380V - 60Hz
<b>2 poles induction motor</b>	1- 220V - 60Hz (with thermal protection)
<b>Insulation class</b>	F
<b>Protection degree</b>	IPX8

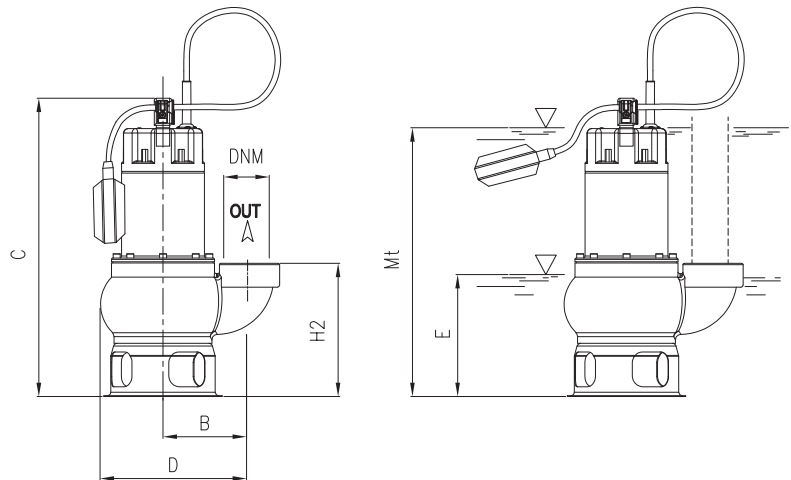
TYPE	LOTS			
	TRUCK		CONTAINER	
	PALLET (cm)	N° pumps	PALLET (cm)	N° pumps
<b>DG 80÷102</b>	80×120×145	48	80×120×190	76
<b>DG 150</b>	80×120×160	51	80×120×160	51





TYPE - 60 Hz		P1	CURRENT		Q (m³/h - l/min)									
1-	3-		1- 220V	3- 380V	0	3	6	9	12	15	18	21	24	
		kW	A		H (m)									
DG 80 (G)	DGT 80	1,05	4,7	2,2	8,3	7,4	6,4	5,6	4,8	3,7				
DG 80/2 (G)	DGT 80/2	1,05	4,7	2,2	8,3	7,4	6,4	5,6	4,8	3,7				
DG 100 (G)	DGT 100	1,35	6,2	2,8	10,4	9,4	8,7	8,1	7,4	6,6	5,7			
DG 100/2 (G)	DGT 100/2	1,35	6,2	2,8	10,4	9,4	8,7	8,1	7,4	6,6	5,7			
DG 82 (G)	DGT 82	1	4,5	2,1	6,6	6	5,3	4,4	3,6	2,8	2	1,3		
DG 102 (G)	DGT 102	1,2	5,3	2,4	7,5	7,1	6,4	5,7	4,9	4	3,2	2,1	1,3	

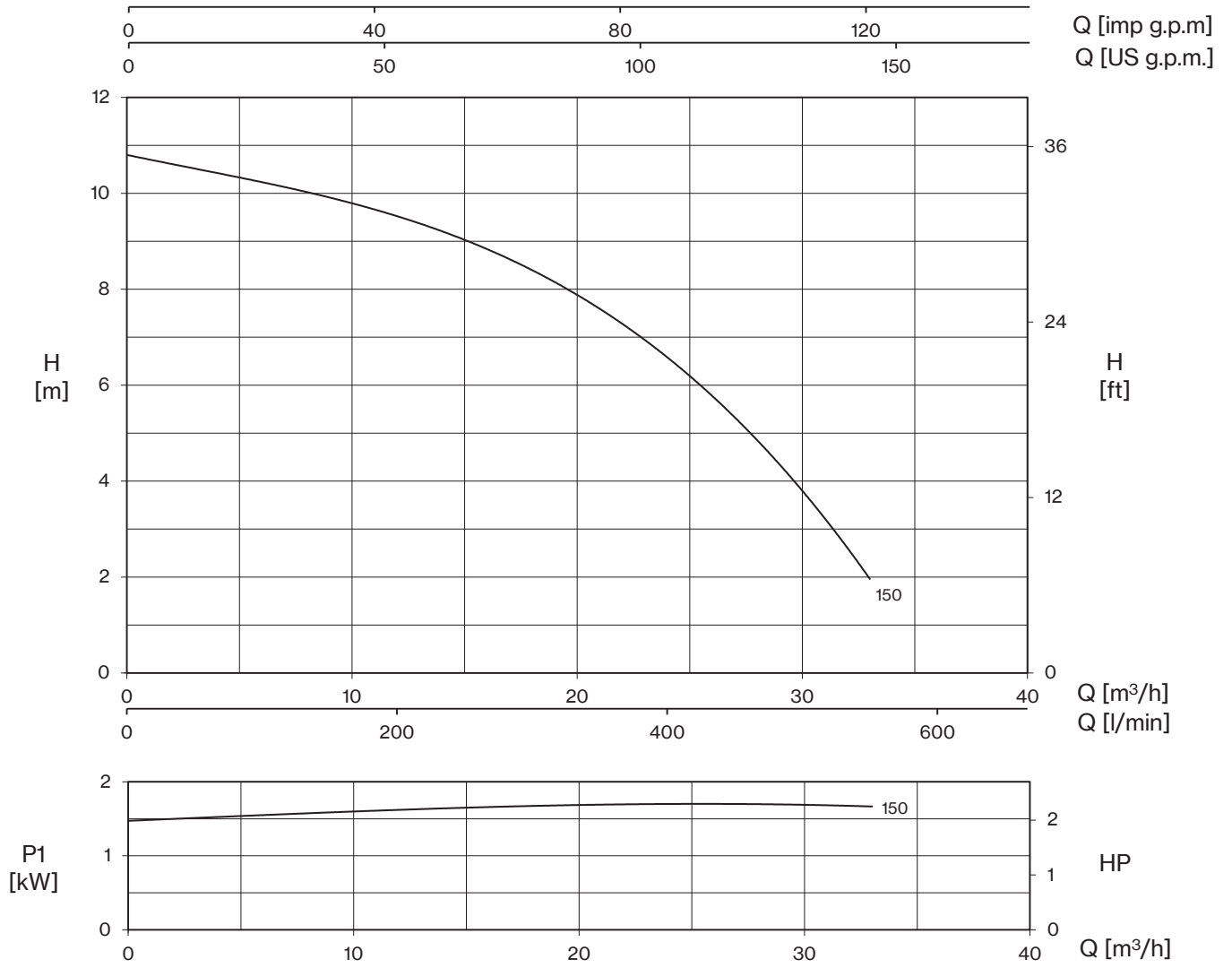
E: maximum emptying level  
Mt: minimum liquid level for continuous duty



TYPE		DIMENSIONS (mm)										Kg
1-	3-	B	C	D	E	H2	Mt	DNM	I	L	M	
DG 80 (G)	DGT 80	115	421	199	155	174	370	1"½ G	250	183	448	13,5
DG 80/2 (G)	DGT 80/2	115	421	199	155	174	370	2" G	250	183	448	14
DG 100 (G)	DGT 100	115	421	199	155	174	370	1"½ G	250	183	448	15,5
DG 100/2 (G)	DGT 100/2	115	421	199	155	174	370	2" G	250	183	448	15,5
DG 82 (G)	DGT 82	120	437	210	171	190	386	2" G	264	203	482	15
DG 102 (G)	DGT 102	120	437	210	171	190	386	2" G	264	203	482	16

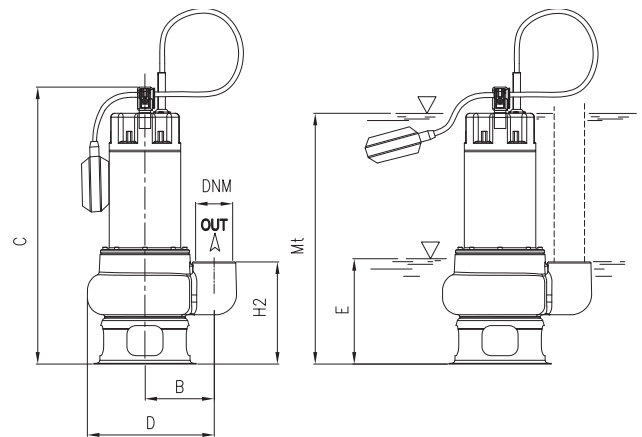


# DG



TYPE - 60 Hz		P1	CURRENT		Q (m³/h - l/min)						
1~	3~		1- 220V	3- 380V	0	6	12	18	24	30	33
		kW	A		H (m)						
DG 150 (G)	DGT 150	1,6	8,7	3,2	10,8	10,3	9,5	8,4	6,7	3,7	2,0

E: maximum emptying level  
Mt: minimum liquid level for continuous duty



TYPE		DIMENSIONS (mm)										Kg
1~	3~	B	C	D	E	H2	Mt	DNM	I	L	M	
DG 150 (G)	DGT 150	115	469	210	160	170	417	2" G	200	260	470	19

