

10-12LM & E14 lines

Deepwell Borehole

Submersible Multistage Centrifugal Pumps for 10", 12", and 14" Wells. These pumps are equipped with a check valve integrated into the delivery outlet. The pump motor bracket and coupling are designed in accordance with NEMA standards, ensuring reliability and compatibility. Common applications include civil and agricultural uses. All components are manufactured from stainless steel using lost wax microfusion technology. The standard material is AISI 304 stainless steel, with the following materials available upon request: AISI 316 stainless steel, Duplex steel (EN 1.4462), and AISI 904L stainless steel. The bushing bearings and wear rings are made from sand abrasion-resistant rubber, while the reverse-thrust ring is constructed from PTFE/Graphite for enhanced durability and performance.

General operating data:

- Capacity up to 860 m³/h
- Pressure up to 540 m
- Hydraulic efficiency 10", up to 79,3%
- Hydraulic efficiency 12", up to 82,5%
- Hydraulic efficiency 14", up to 85,7%
- Powers up to 400 kW
- Rotation speed 2.900 rpm
- Maximum depth: 350 m
- Maximum quantity of sand: 100 gr/m³
- Drinking water compatibility according to DM174 MEI ≥ 0,4 (EU directive No.547/2012)
- Performance tolerance: ISO9906-3B.

Construction features

Suction and delivery outlet and NRV valve	stainless steel AISI 304 (LMS) stainless steel AISI 316 (LMX - EX) Duplex EN 1.4462 (LMD - ED) Cast iron (E)
Impellers and diffusers	stainless steel AISI 304 (LMS) stainless steel AISI 316 (LMX - EX) Duplex EN 1.4462 (LMD - ED) Cast iron (E)
Upper bushings	NBR rubber
Shaft pump side	stainless steel AISI 304 (LMS) stainless steel AISI 316 (LMX) Duplex EN 1.4462 (LMD) stainless steel AISI 431 (E - EX - ED)
Quantity of sand in the water	max 100 g/m ³

Motor

Asynchronous 2 pole	rewindable water cooled
Insulation class	Y (max 30 °C) - PPC winding type F (max 50 °C) - PE2+PA or LPE winding type
Protection degree	IP68
Liquid temperature	max 30 °C (max 50 °C on request)
Depth of immersion	max 350 m



10LM line



12LM line



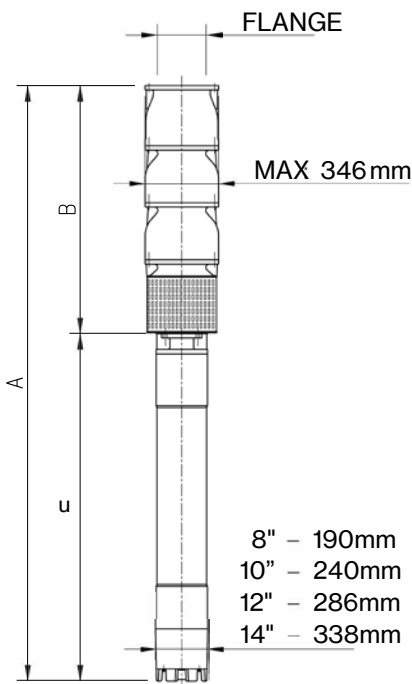
E14

E14 A

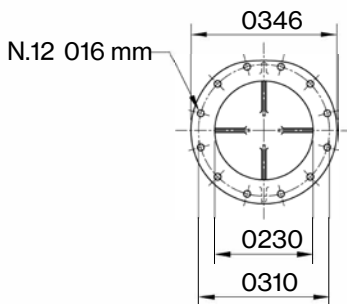
50 Hz - 2900 rpm				Q									
TYPE	SUITABLE MOTOR 3- 400V		I/min	0	1333	2667	4000	5333	6667	8000	8500	9667	
	P2		CURRENT	I/sec	0	22,2	44,5	66,7	88,9	111,1	133,3	141,8	161,2
	HP	kW	A	m³/h	0	80	160	240	320	400	480	510	580
E14 A/1D	90	66	126,0	H (m)	71,8	66,5	62,5	58,7	54,4	49,0	41,6	38,2	
E14 A/1C	100	75	143,2		76,8	71,7	67,5	63,8	59,6	54,6	47,9	45,0	39,0
E14 A/1B	125	92	175,1		85,1	79,9	75,6	71,8	67,8	63,3	57,7	55,1	48,2
E14 A/1A	150	110	211,0		97,1	90,8	85,5	80,4	75,6	70,7	65,4	63,0	57,6
E14 A/1	175	130	245,3		108,6	99,3	92,3	87,0	82,5	78,0	73,0	70,8	64,1
E14 A/2D	175	130	245,3		143,5	133,0	125,0	117,4	108,8	98,0	83,2	76,4	
E14 A/2C	200	150	277,2		153,6	143,4	135,0	127,6	119,1	109,1	95,8	90,0	78,0
E14 A/2B	250	185	342,2		170,2	159,8	151,2	143,6	135,6	126,5	115,4	110,2	96,4
E14 A/2A	300	220	430,0		194,3	181,6	171,0	160,8	151,2	141,4	130,8	126,0	115,2
E14 A/2	340	250	481,0		217,3	198,6	184,6	174,0	165,0	156,0	146,0	141,6	128,2

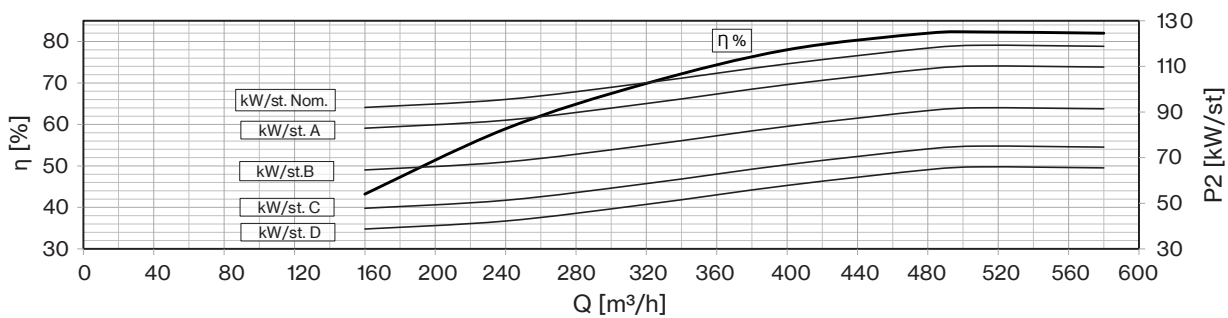
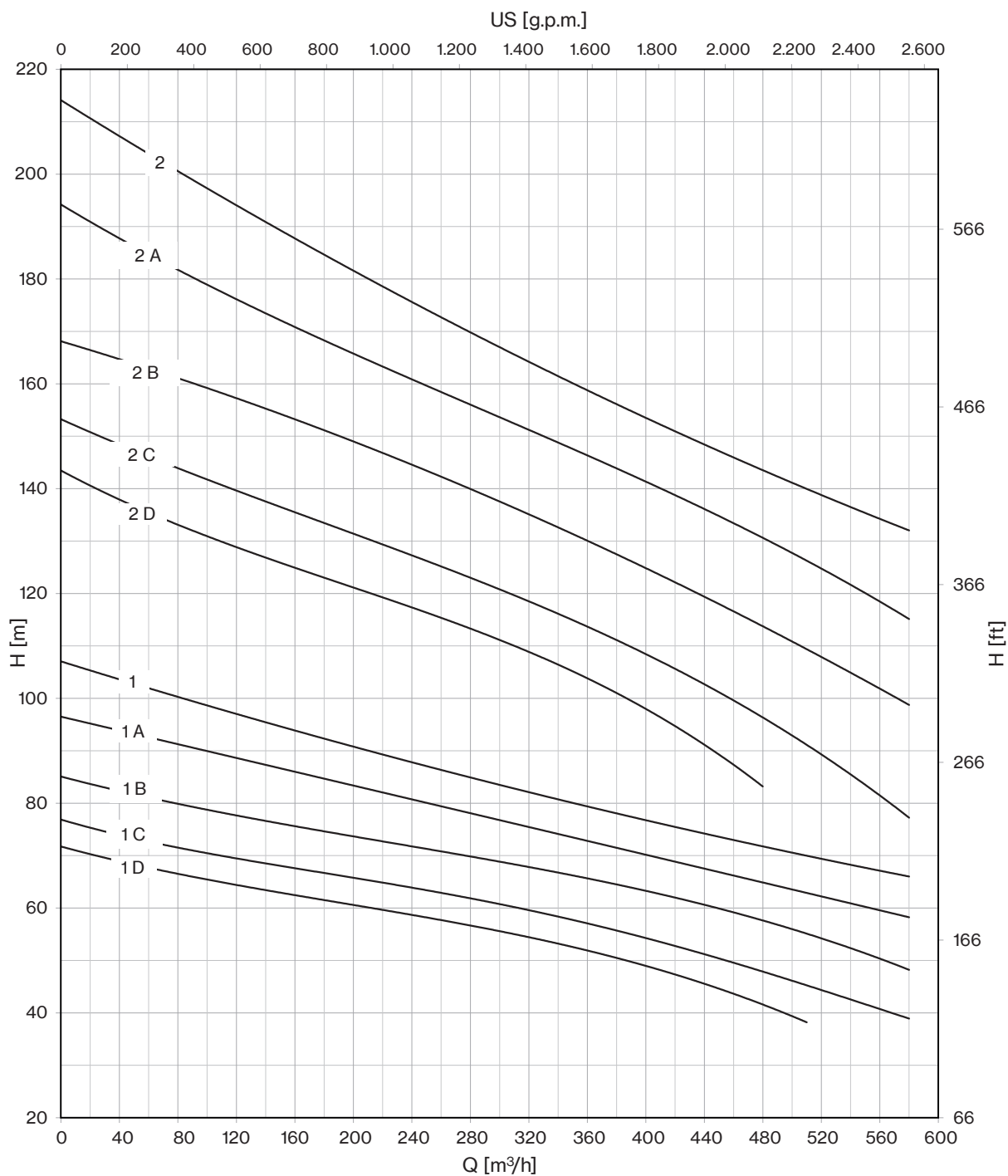
Max Eff. %	82,3
Max KW / St. D (230mm) =	64,9
Max KW / St. C (238mm) =	74,0
Max KW / St. B (251mm) =	90,8
Max KW / St. A (268mm) =	109,1
Max KW / St. - (276mm) =	119,3

NPSH (m)	Q=25%	Q=50%	Q=75%	Q=100%
	5,8	6,4	9,4	15,3



TYPE	MOTOR BRACKET	DIMENSIONS (mm)			WEIGHT (kg)	
		A	B	C	MOTOR	PUMP
E14 A/1D-8	8" NEMA	2237	935	1302	214	184
E14 A/1C-8		2318	935	1383	230	184
E14 A/1B-8		2518	935	1583	270	184
E14 A/1A-8		2668	935	1733	300	184
E14 A/1-10	10"	2569	935	1634	385	184
E14 A/2D-10		2809	1175	1634	385	260
E14 A/2C-10		2909	1175	1734	415	260
E14 A/2B-10	12"	3159	1175	1984	480	260
E14 A/2A-12		3285	1175	2110	700	260
E14 A/2-12		3455	1175	2280	775	260



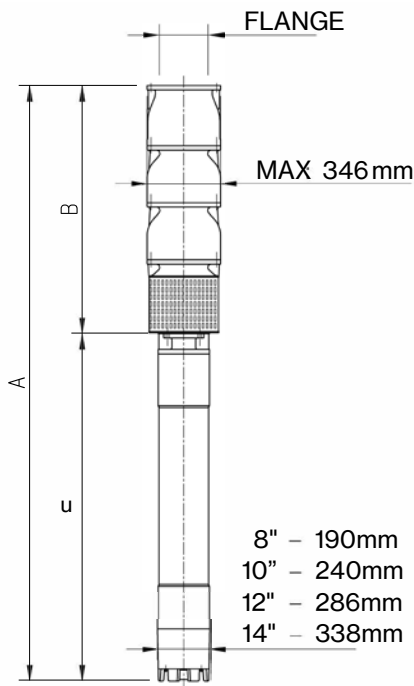


E14 B

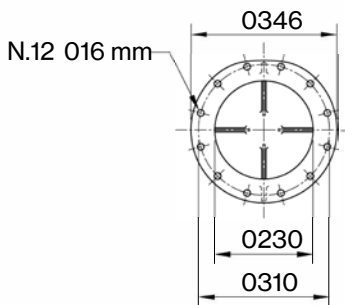
50 Hz - 2900 rpm				Q									
TYPE	SUITABLE MOTOR 3- 400V		l/min	0	1333	4000	5333	6667	9000	10000	12500	14333	
	P2		CURRENT	l/sec	0	22,2	66,7	88,9	111,1	150,0	166,7	208,3	238,9
	HP	kW	A	m³/h	0	80	240	320	400	540	600	750	860
E14 B/1C	125	92	175,1	H (m)	73,5	72,5	68,0	63,5	57,8	44,0	36,5	14,0	
E14 B/1B	150	110	211,0		80,4	79,5	75,0	71,5	66,0	53,5	46,7	26,5	
E14 B/1A	175	130	245,3		87,0	84,0	79,0	77,0	73,8	66,0	61,5	45,5	29,0
E14 B/1	200	150	277,2		100,8	97,4	90,4	86,9	82,9	74,2	69,0	53,9	38,4
E14 B/2C	250	185	342,2		147,0	145,0	136,0	127,0	115,6	88,0	73,0	28,0	
E14 B/2B	300	220	430,0		160,7	159,0	150,0	143,0	132,0	107,0	93,4	53,0	
E14 B/2A	400	300	551,0		174,0	168,0	158,0	154,0	147,6	132,0	123,0	91,0	58,0
E14 B/2	400	300	551,0		201,6	194,8	180,8	173,8	165,8	148,4	138,0	107,8	76,8

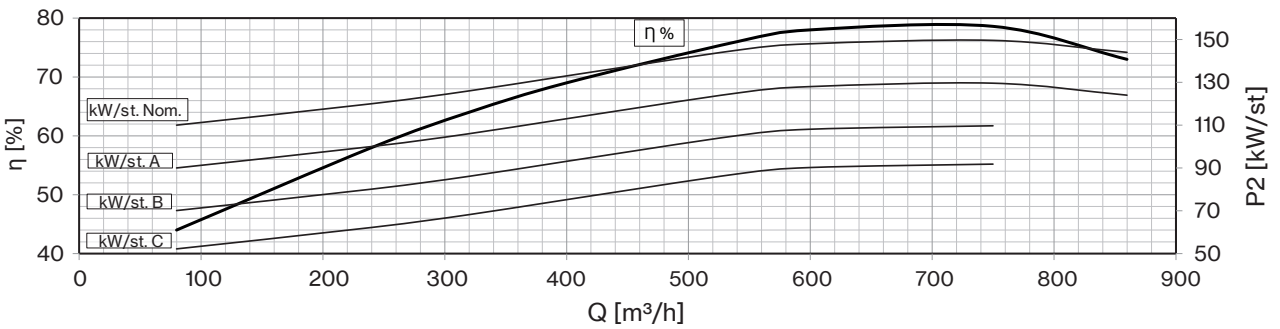
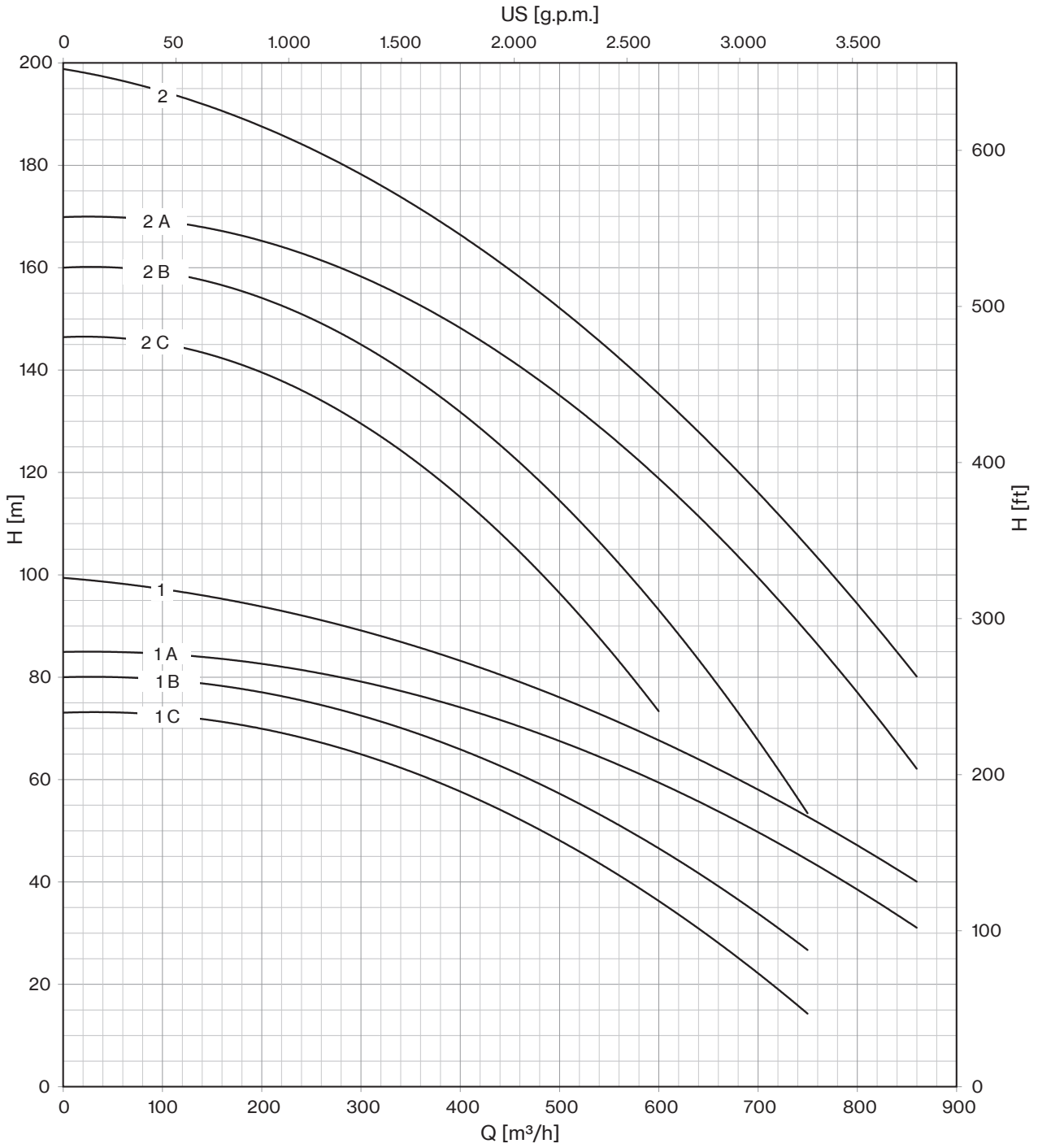
Max Eff. %	78,6
Max KW / St. C (240mm) =	91,8
Max KW / St. B (D.250mm) =	109,7
Max KW / St. A (259mm) =	129,6
Max KW / St. - (274mm) =	149,6

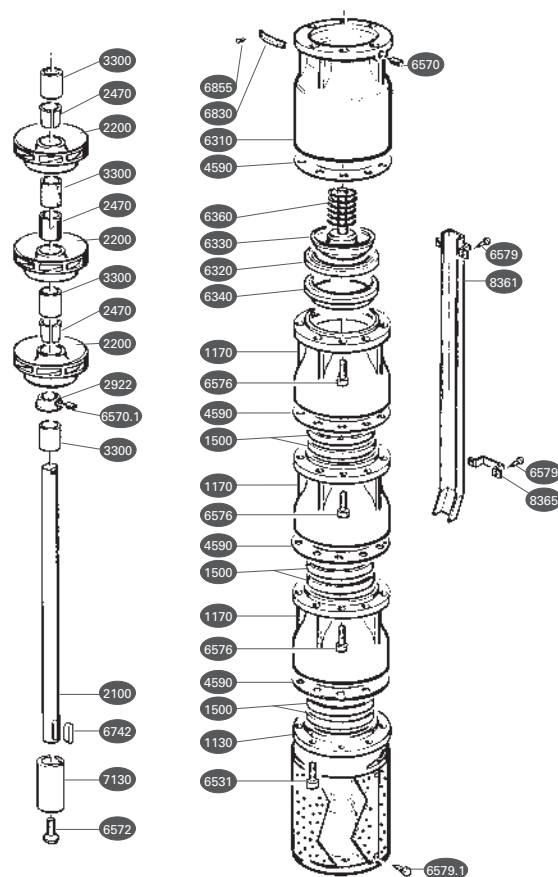
NPSH (m)	Q=25%	Q=50%	Q=75%	Q=100%
	6	6,4	8,6	16,3



TYPE	MOTOR BRACKET	DIMENSIONS (mm)			WEIGHT (kg)	
		A	B	C	MOTOR	PUMP
E14 B/1C-8	8" NEMA	2488	905	1583	270	184
E14 B/1B-8		2638	905	1733	300	184
E14 B/1A-10		2539	905	1634	385	184
E14 B/1-10	10"	2639	905	1734	415	184
E14 B/2C-10	12"	3159	1175	1984	480	260
E14 B/2B-12		3285	1175	2110	700	260
E14 B/2A	14"	3455	1175	2280	775	260
E14 B/2		3455	1175	2280	775	260







N. CODE	DESCRIPTION	MATERIAL	(*) Q.TY
1130	MOTOR BRACKET	Cast iron	
1170	DIFFUSER	Cast iron	
1500	WEAR RING	Rubber	1 × Stage
2100	SHAFT	Stainless steel	
2200	IMPELLER	Cast iron	1 × Stage
2470	BUSHING	Steel	1 × Stage
2922	SANDGUARD	Brass	
3300	BEARING	Steel - rubber	1 × Stage
4590	GLAND	Guarnital	1 × Stage
6310	VALVE BODY	Valve body / Cast Iron	
6320	VALVE HOUSING	Rubber	
6330	WASHER	Stainless steel	
6340	HOUSING RING	Cast iron	
6360	SPRING	Stainless steel	
6531	STRAINER	Stainless steel	
6570	SCREW	Stainless steel	
6570.1	SCREW	Stainless steel	
6572	SCREW	Stainless steel	
6576	SCREW	Stainless steel	
6579	SCREW	Stainless steel	
6579.1	SCREW	Stainless steel	
6742	KEY	Stainless steel	
6830	LABEL	Stainless steel	
6855	PIN	Stainless steel	
7130	JOINT	Stainless steel	
8361	SHEAT	Stainless steel	
8365	CABLE GUARD CLAMP	Stainless steel	

* Recommended spare parts quantity